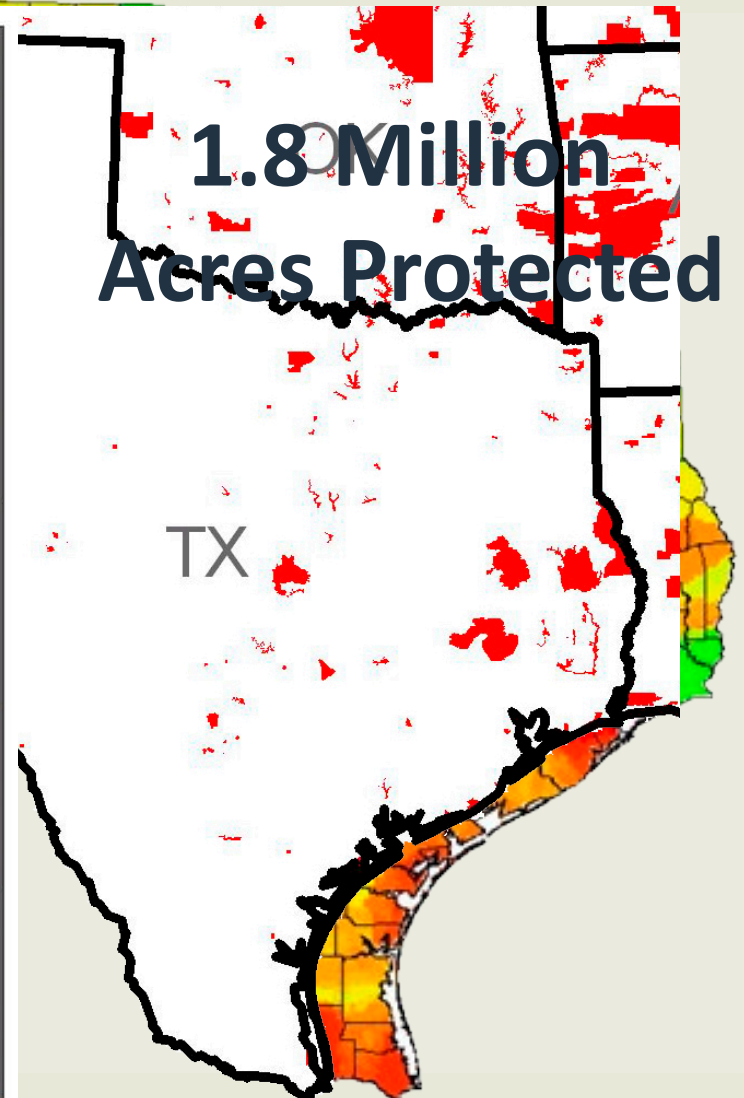
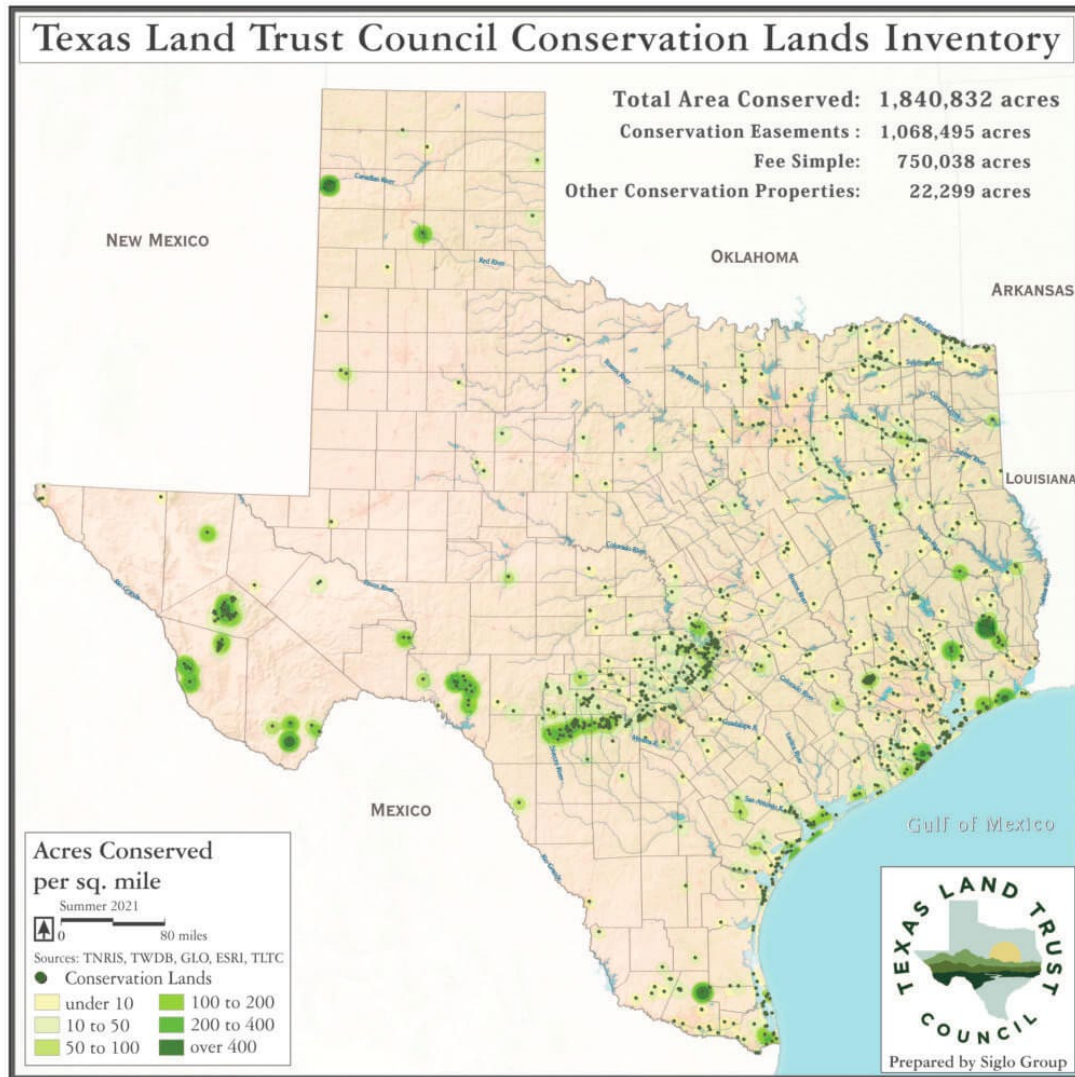




CONSERVATION EASEMENTS IN TEXAS

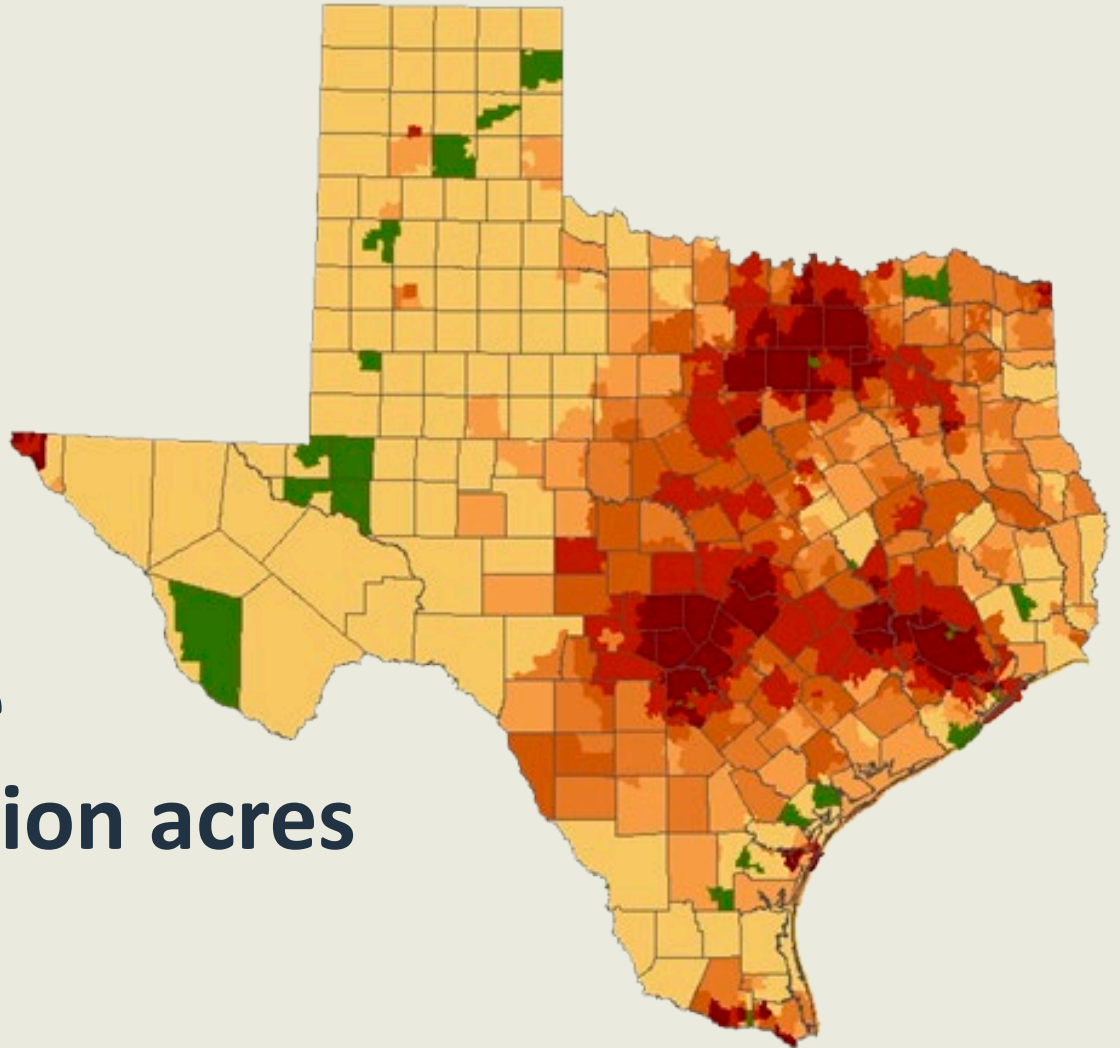
Mark Steinbach, Ph.D.
Texas Land Conservancy

WHERE WE ARE NOW



WHERE WE COULD BE

**By 2030 we lose
another 1.5 million acres**



Texas Land Conservation

```
graph TD; A[Texas Land Conservation] --> B[State Parks WMA's]; A --> C[Private Landowners];
```

State Parks
WMA's

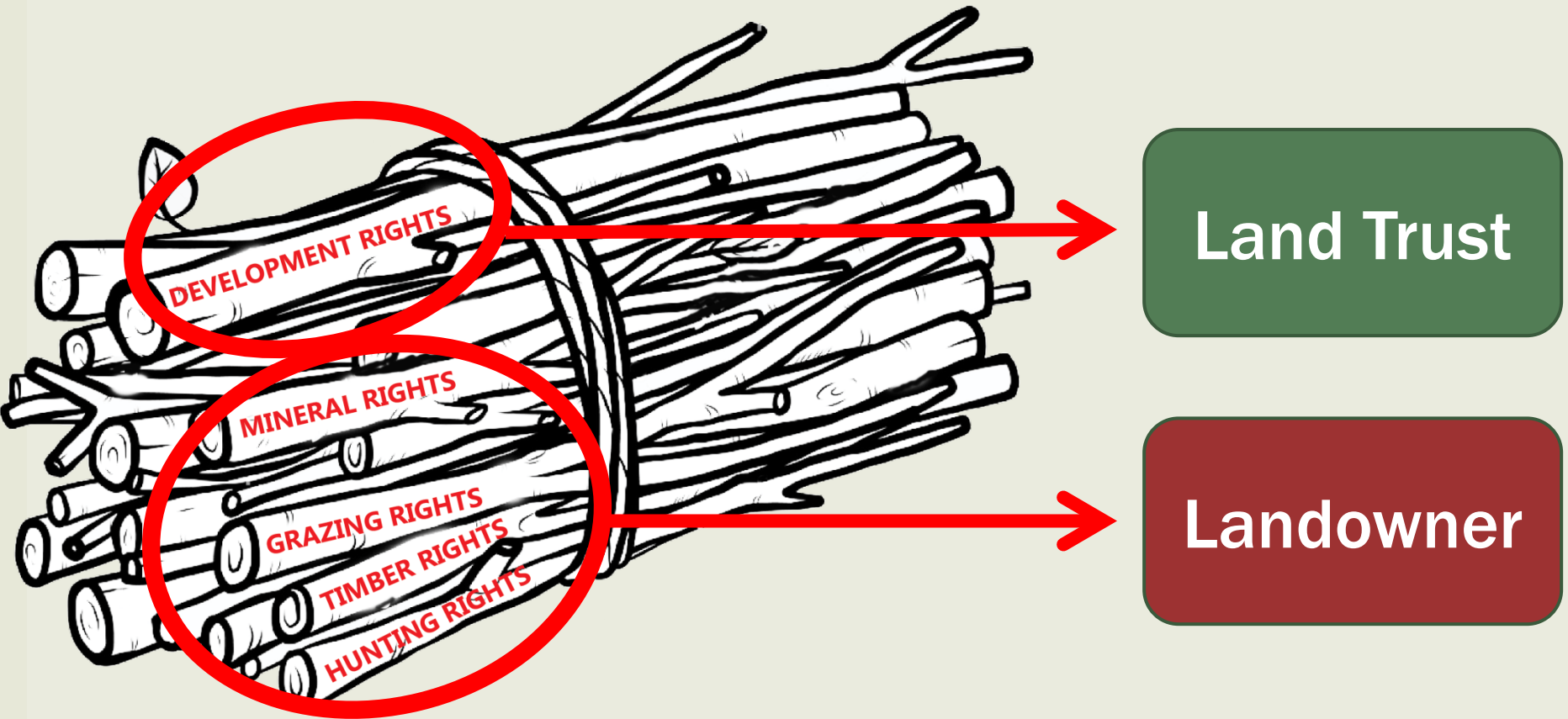
Private
Landowners

WHAT IS A CONSERVATION EASEMENT

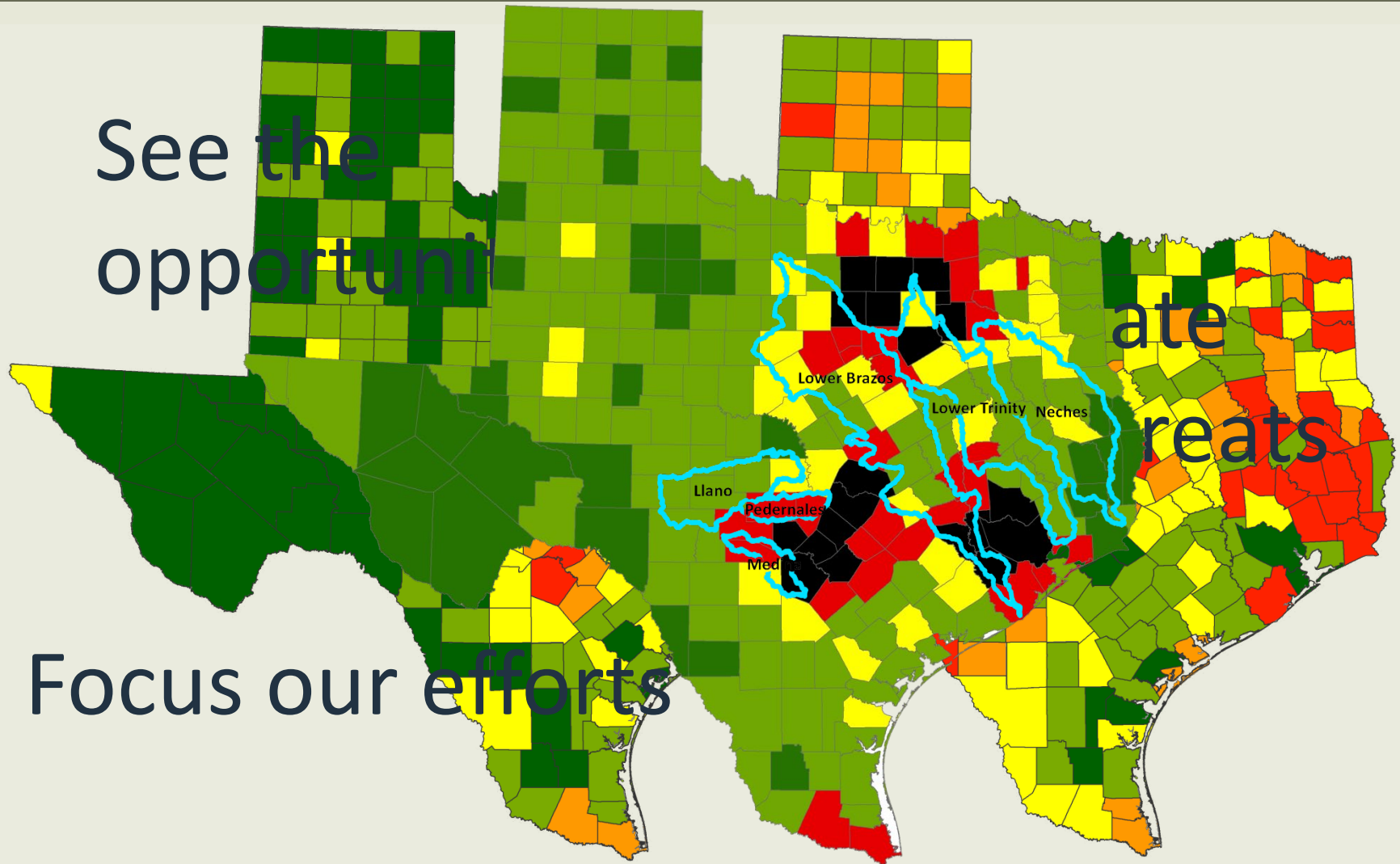
- A legal agreement between a property owner and a “qualified entity” to limit the kind and amount of development on a property
- Allows landowner to maintain ownership while protecting land in perpetuity



HOW A CONSERVATION EASEMENT WORKS



THREATS AND OPPORTUNITIES

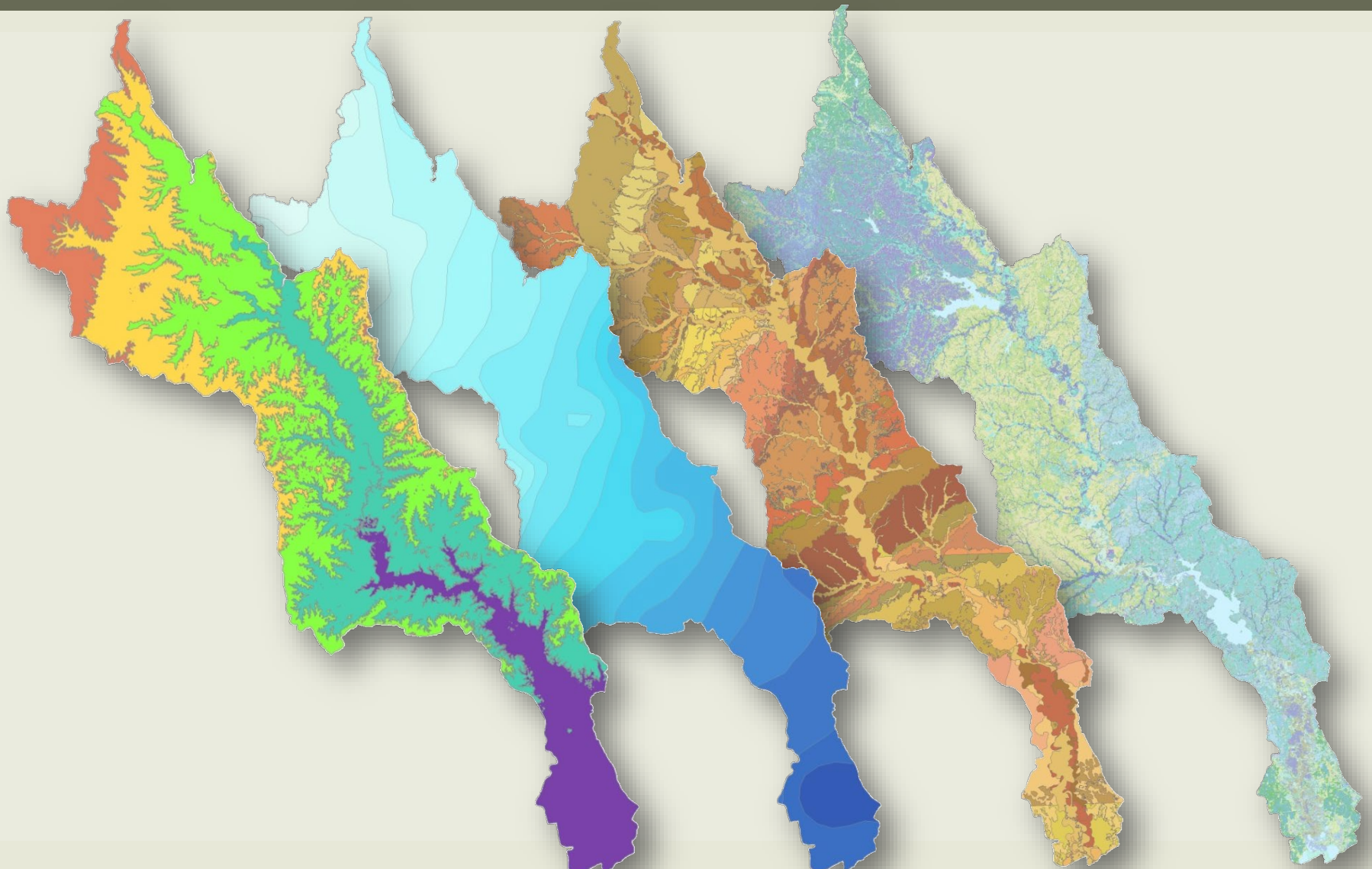


THE TRINITY WATERSHED

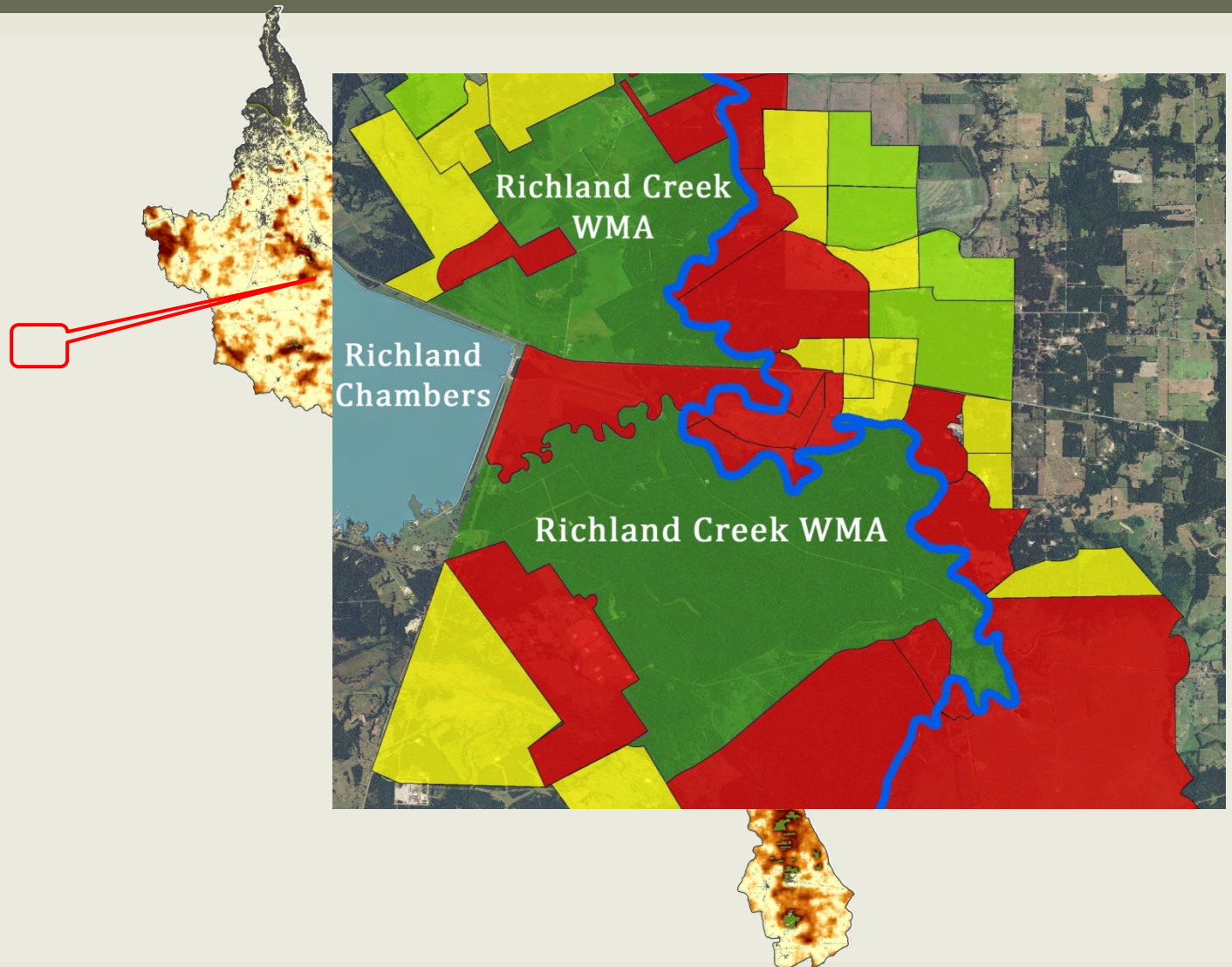
480 billion gallons a year
40% of Texas water



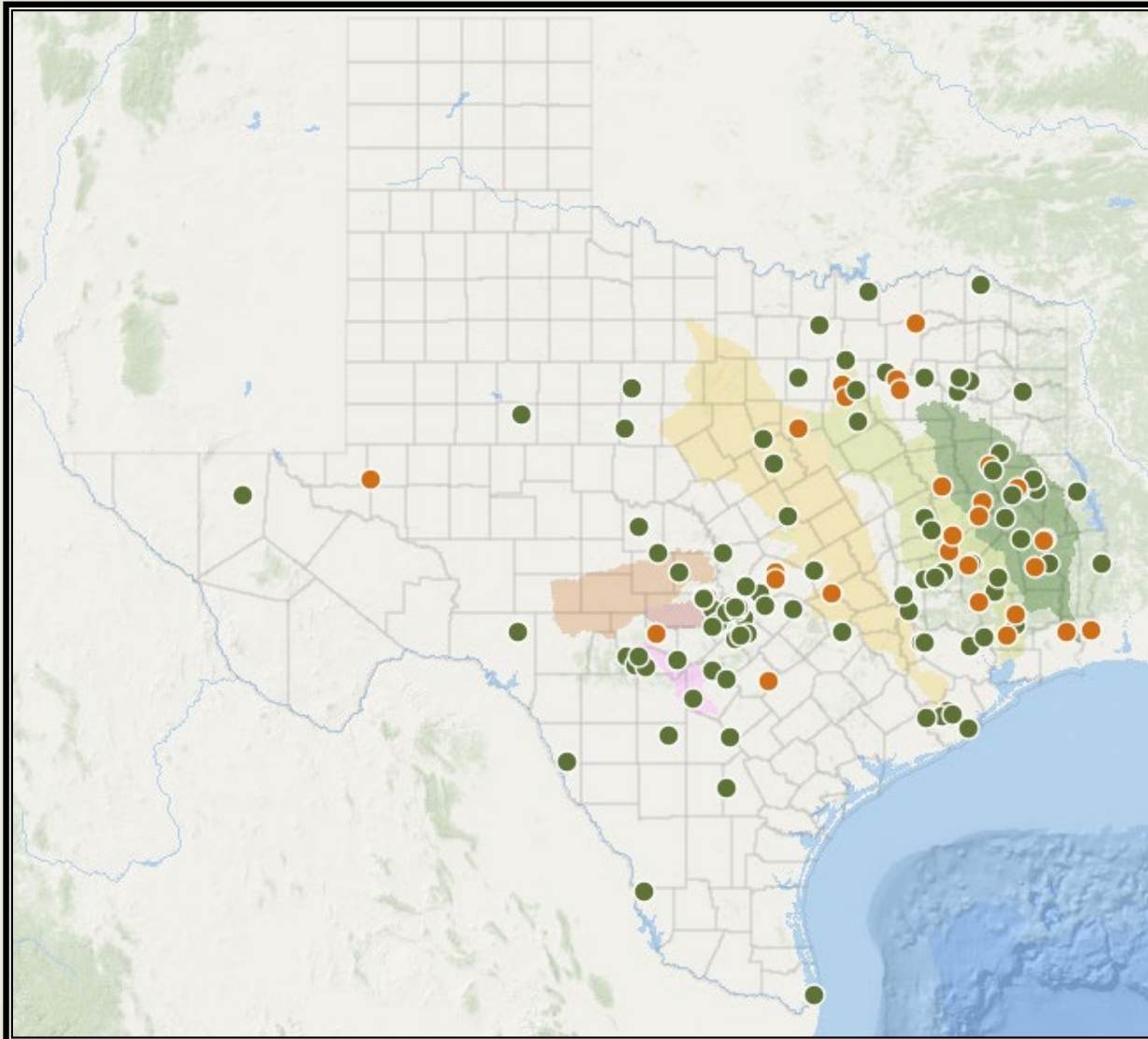
CONSERVATION PLANNING



FOCUSED CONSERVATION



THE TEXAS LAND CONSERVANCY



HOW DO YOU FIND A LAND TRUST

- Texas Land Trust Council
(www.texaslandtrustcouncil.org)
- Each have different missions, and areas of operation
- Accreditation





TEXAS LAND CONSERVANCY

Protecting the Nature of Texas.



www.TexasLandConservancy.org