



great springs
PROJECT

FROM THE ALAMO TO THE CAPITOL

A Legacy Project For All of Texas



Garry Merritt
CEO

garry@greatspringsproject.org
(210) 260-9839

Leakey

CITY LIMIT

POP. 425

5:30 Yoga classes

discontinued
due to large

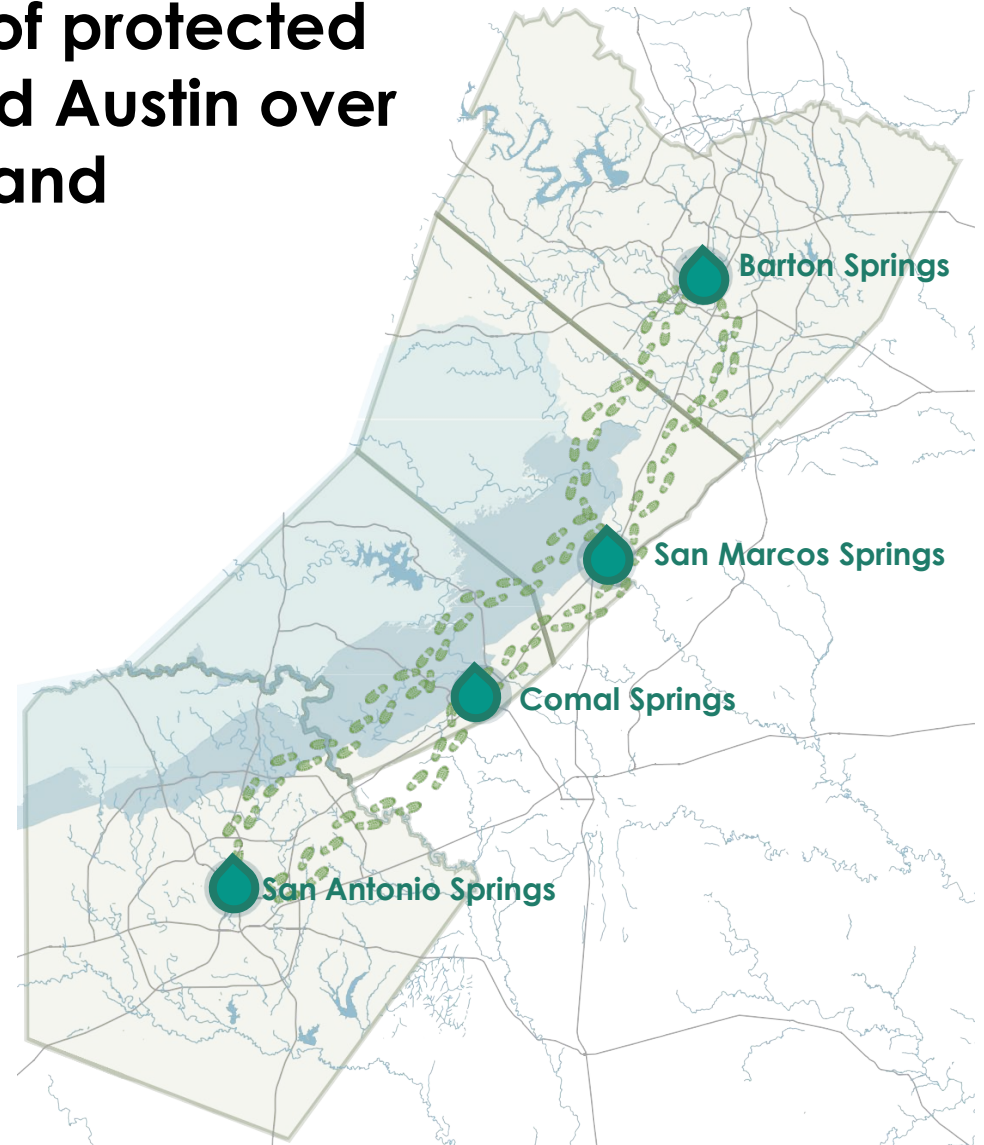
Tamale Orders

Call [REDACTED] @ [REDACTED]

Mission: Connecting Four Great Springs

A national park-sized corridor of protected lands between San Antonio and Austin over the Edwards Aquifer recharge and contributing zones.

- A 100-mile spring-to-spring trail network from the Alamo to the Capitol.
- 50,000 acres of additional protected lands over the recharge zone between San Antonio and Austin.



- PITCH A BIG TENT
- KEEP YOUR EYES DOWNFIELD
- A RISING TIDE LIFTS ALL BOATS

IF YOU WANT TO GO FAST,
GO ALONE.

IF YOU WANT TO GO FAR,
GO TOGETHER.

Trails Development Steering Committee

To inform trail implementation, align efforts across the region and ensure community visions are stewarded

- Jim Bailey, ActivateSA
- Sherwood Bishop, San Marcos Greenbelt Alliance
- Ylida Capriccioso, City of New Braunfels Parks and Recreation
- Jamie Lee Case, City of San Marcos Parks and Recreation
- George Cofer, Hill Country Conservancy
- Janet Coles, Travis County Parks
- Mariana Espinoza, Kyle Parks and Recreation
- Steven Gonzales, El Camino Real de los Tejas National Historic Trail
- Steve Graham, San Antonio River Authority
- Aaron Mahr, National Park Service - National Trails
- Nancy Pappas, Headwaters at the Comal
- Nathan Pence, Guadalupe-Blanco River Authority
- Margo Richards, Lower Colorado River Authority
- Maria Rocha, Indigenous Cultures Institute
- Brandon Ross, City of San Antonio Parks and Recreation
- Lauren Shrum, City of Schertz Parks and Recreation
- Scott Sellers, City of Kyle
- Butch Smith, Hill Country Conservancy
- Robin Stallings, Bike Texas
- Mark Taylor, Emerald Crown Regional Trail Work Group
- Alexandra Thompson, Hays County Natural Resources
- Joshua Tuck, National Park Service
- Katie Wettick, City of Austin Public Works



Equity Task Force

To ensure our work provides access to nature for all people of all abilities

- Melissa Ayala, Waterloo Greenway
- Monica Borrego, New Braunfels Food Bank
- David Buggs, Texas Parks and Wildlife Department
- Mariana Espinoza, City of Kyle
- Arnold Garcia (late), Former Editorial Page Editor, Austin American Statesman
- Dr. Ana Gonzalez, City of Austin
- Angelica Holmes, Black Outside, Inc.
- Jeanette Honermann, REI, Inc.
- Reverend Addae Kraba, Unitarian Universalists of New Braunfels
- Pablo Montes, Indigenous Cultures Institute
- Maria Rocha, Indigenous Cultures Institute
- Sister Cindy Stacy, Headwaters at Incarnate Word
- Dr. Marla Torrado, Community Powered Workshop
- Joshua Tuck, National Park Service
- Rocío Villalobos, City of Austin
- Dr. Skyller Walkes, University of Texas



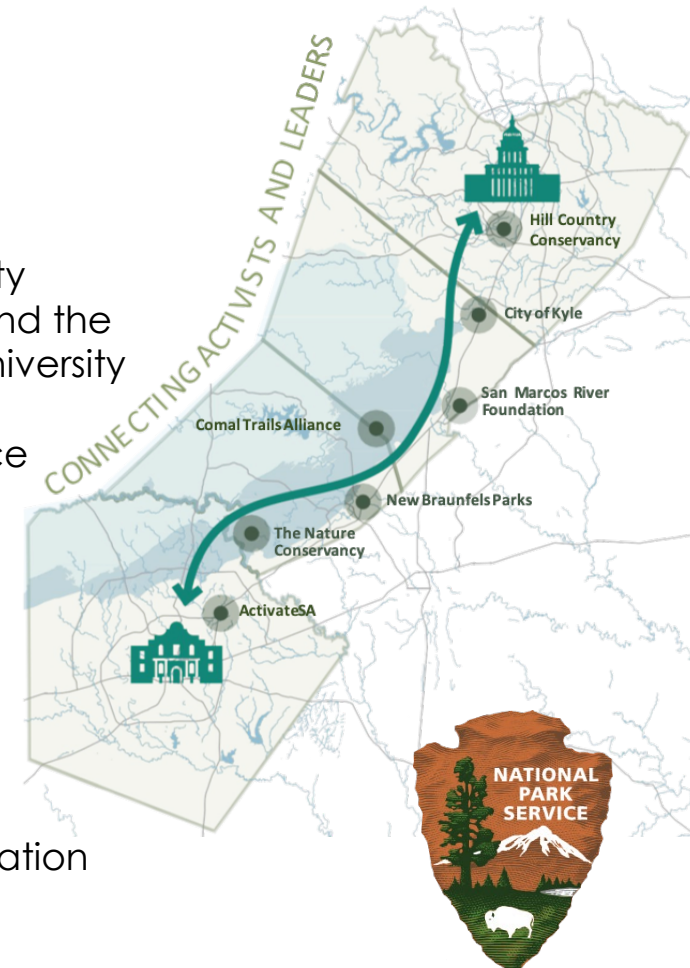
“GSP’s mission to protect and connect Texas’ beautiful natural surroundings is underpinned by the fundamental requirement of equity and inclusion in public access to this beauty.”

— Equity Task Force

Land & Trail Partners

Connecting community leaders, stakeholders and interest groups throughout the corridor:

- Audubon Texas
- Austin Outside
- Budaful Hiker
- City of San Marcos,
- City of Kyle
- City of Buda
- Hays County
- City of New Braunfels
- City of Schertz
- Comal County
- City of San Antonio
- City of Austin
- Bexar County
- Colorado River Alliance
- Colorado River Land Trust
- Comal County Conservation Association
- Comal Trails Alliance
- Conservation Fund
- Green Spaces Alliance
- Guadalupe Blanco River Authority
- Guadalupe-Blanco River Trust
- Headwaters at the Comal
- Hill Country Alliance
- Hill Country Conservancy
- Hill Country Land Trust
- Lower Colorado River Authority
- Meadows Center for Water and the Environment at Texas State University
- San Antonio River Authority
- San Marcos Greenbelt Alliance
- San Marcos River Foundation
- Shoal Creek Conservancy
- Texas Land Conservancy
- Texas Water Foundation
- Texas Water Trade
- The Nature Conservancy
- Travis Audubon
- Trust for Public Land
- Wimberly Valley Water Association





PITCH A BIG TENT



KEEP YOUR EYES DOWNFIELD



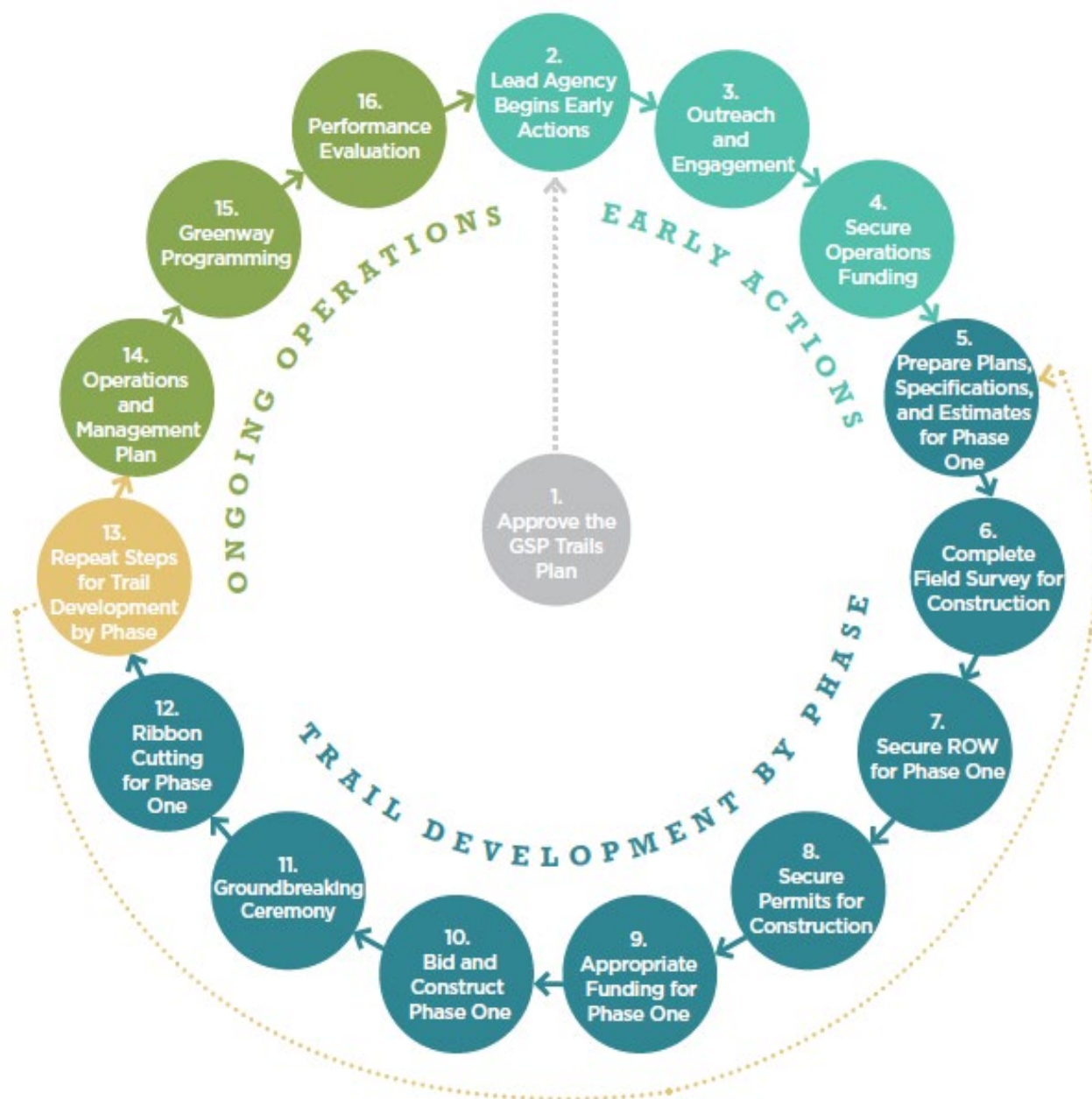
A RISING TIDE LIFTS ALL BOATS





Chapter 4

The Path Forward

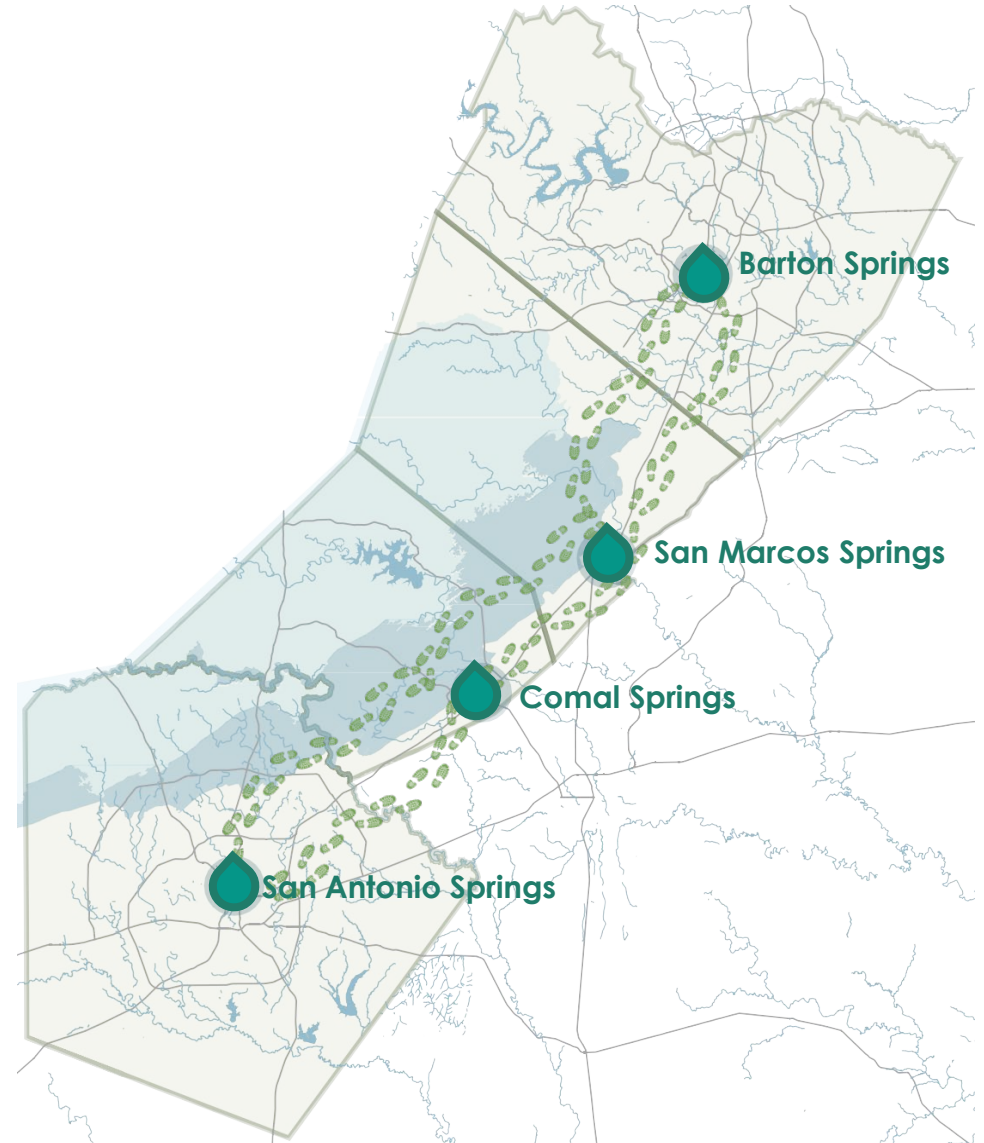




great springs
PROJECT

Strategic Plan:

- Put Trail On The Ground.
- Put Land Into Conservation





PITCH A BIG TENT



KEEP YOUR EYES DOWNFIELD



A RISING TIDE LIFTS ALL BOATS

Partner Events

Work Locally with a Regional Vision

- **Trail Connect I: October 29, 2020**
 - Pairing trail advocates and government leaders from each of our four counties and sharing their work.
- **Trail Connect II: May 27, 2021**
 - Connecting TxDOT Districts, MPOs, RMAs, River Authorities and the Governor's office to discuss the benefits of trails.
- **Trail Connect III: February 22, 2022**
 - Localizing our work to the Northeast Alamo Area and bringing together staff from the cities of Schertz, Selma, Cibolo, and New Braunfels to discuss near term projects for trail connectivity with TxDOT and AAMPO.



$$1 + 1 = 3$$



- PITCH A BIG TENT
- KEEP YOUR EYES DOWNFIELD
- A RISING TIDE LIFTS ALL BOATS

I'M GLAD I DID IT,
PARTLY BECAUSE IT WAS WORTH IT,
BUT MOSTLY BECAUSE I SHALL
NEVER HAVE TO DO IT AGAIN.

MARK TWAIN